



Item No. \_\_\_\_\_

# C794

## Soft Serve Freezer

Twin Twist

### Features

Offers all the popular soft serve variations, from low or non-fat ice creams, to custards, yogurt, and sorbet. Serve two separate soft serve flavors or an equal combination of both in a twist.

#### Freezing Cylinder

Two, 3.4 quart (3.2 liter).

#### Mix Hopper

Two, 14 quart (13.2 liter). Separate hopper refrigeration (SHR) maintains mix below 41°F (5°C) during Auto and Standby modes.

#### Indicator Lights

Mix Low and Mix Out light alerts operator to add mix. Audible alarm may be enabled to sound when mix is low.

#### Electronic Controls

Softech™ is our exclusive microprocessor-based master control that regulates refrigeration by measuring product viscosity to maintain consistent quality.

#### Standby

During long no-use periods, the standby feature maintains safe product temperatures in the mix hopper and freezing cylinder.

#### Freezer Door

A specially designed thermoplastic door allows quick ejection of product. Push forward on the ergonomic draw handle to dispense. Self-closing draw handles are standard.

#### Door Interlock System

Protects the operator from injury as the beater will not operate without the dispensing door in place.

#### Two Locking Casters

Front casters have a locking feature for operators to keep equipment in place. The lock can be released to move the equipment for cleaning.

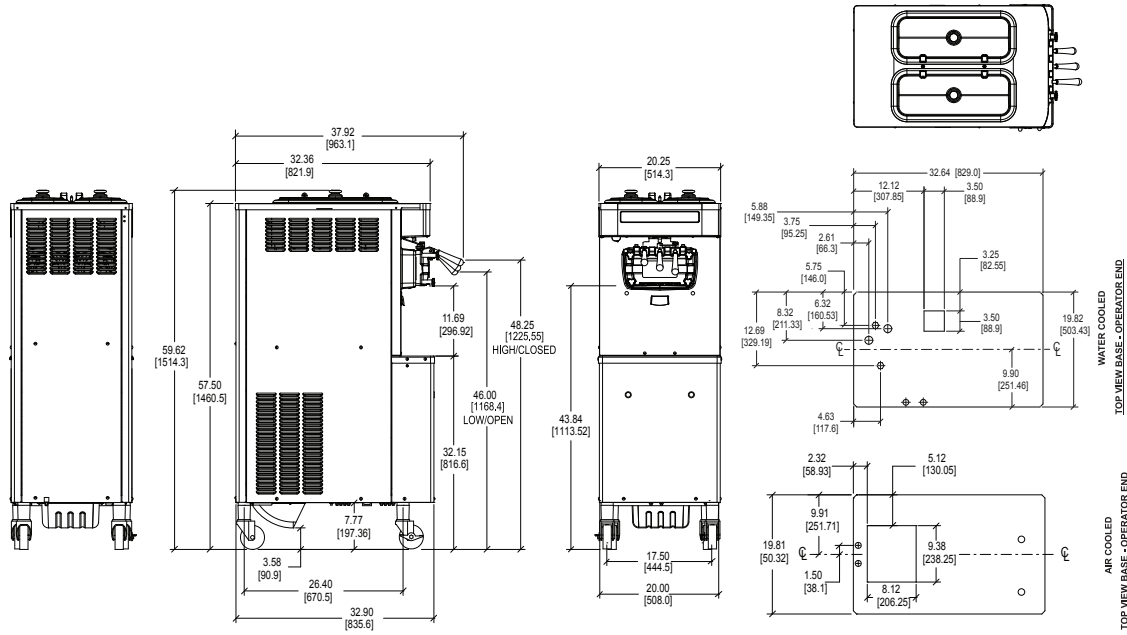
750 N. Blackhawk Blvd. Rockton, Illinois 61072  
**800-255-0626**  
Phone 815-624-8333 Fax 815-624-8000  
[www.taylor-company.com](http://www.taylor-company.com)  
[info@taylor-company.com](mailto:info@taylor-company.com)

ISO 9001:2015  
Registered Firm



Standard 6

LISTED  
SA2650Selected 50/60  
Hz. Models



FIGURES IN BRACKETS INDICATE MILLIMETERS / DECIMAL AND FRACTIONAL DIMENSIONS EQUAL TO ( PLUS OR MINUS 1/16 INCH [1.5mm].

Weights	lbs.	kgs.
Net	640	290.3
Crated	699	317.1

\*For reference only

	cu. ft.	cu. m.
Volume	48.9	1.38

Dimensions	in.	mm.
Width	20-1/4	514
Depth	32-5/16	836
Height	59-5/8	1514
Floor Clearance	4-1/2	114

\*Mounted on standard casters

Electrical	Maximum Fuse Size		Minimum Circuit Ampacity		Poles (P) Wires (W)
	Left	Right	Left	Right	
208-230/60/1 Air	25	25	20	19	2P 3W
208-230/60/1 Water	25	25	20	19	2P 3W
208-230/60/3 Air	20	15	16	15	3P 4W
208-230/60/3 Water	20	15	16	15	3P 4W
220-240/50/1 Air	15	15	15	13	2P 3W
380-415/50/3N~ Air	9	8	8	6	4P 5W

This unit may be manufactured with other electrical characteristics and may have additional regulatory agency approvals. Consult the local Taylor distributor for other electrical characteristics and agency approvals based on specific electrical and country requirements.

(For exact electrical information, approval marks, and refrigerant, always refer to the data label of the unit.)

**Continuing research results in steady improvements; therefore, these specifications are subject to change without notice.**

**Bidding Specs**

Electrical: Volt \_\_\_\_\_ Hz \_\_\_\_\_ ph \_\_\_\_\_  
 Neutral: Yes No      Cooling: Air Water NA

**Options:**

All options may not be available in combination with others or with all electrical or cooling configurations. Please consult your local Taylor distributor.

**Authorized Taylor Distributor**

**Specifications**

**Electrical**

Two dedicated electrical connections are required. See the electrical chart for the proper electrical requirements. Manufactured to be permanently connected. Consult your local Taylor distributor for cord and receptacle specifications as local codes allow.

**Beater Motor**

Two, 1.5 hp.

**Refrigeration System**

Two, 10,100 BTU/hr. R449A.  
 Separate Hopper Refrigeration (SHR), one, 400 BTU/hr. R134a. (BTUs may vary depending on compressor used.)

**Air-Cooled**

Minimum clearance of 3" (76 mm) around all sides. Install the deflector provided to prevent recirculation of warm air. Minimum air clearances must be met to ensure adequate airflow for optimum performance.

**Water-Cooled**

Water inlet underside of base 1/2" FPT.

**Accessories**

- Cone Dispenser
- Draw Handles to meet Americans with Disabilities Act requirements
- Draw Valve Lock Kit
- Syrup Rail Kit (side mount)

**Options**

- Hopper Agitators
- Rear Mix Lights

**TAYLOR®**  
 750 N. Blackhawk Blvd.  
 Rockton, Illinois 61072  
[www.taylor-company.com](http://www.taylor-company.com)