



Item No. \_\_\_\_\_

# 632

## Combination Freezer

Single Shake, Single Soft Serve

### Features

Offer all the popular shake and soft serve variations, from low fat shakes and smoothies, and low or non-fat ice creams to custards, yogurt and sorbet.

### Freezing Cylinder

Shake side, 7 quart (6.6 liter).

Soft Serve side, 3.4 quart (3.2 liter).

### Refrigerated Mix Hoppers

Two, 20 quart (18.9 liter). Separate hopper refrigeration (SHR) maintains mix below 41°F (5°C) during Auto and Standby modes.

### Indicator Lights

Mix Low light reminds operator to add mix. Audible alarm may be enabled to sound when mix is low.

### Electronic Controls

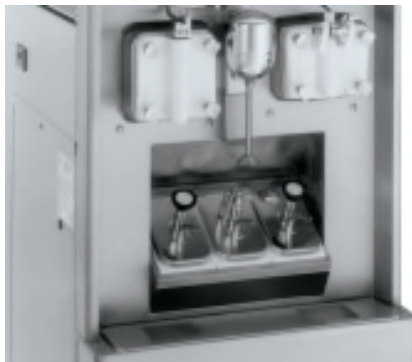
Finished product quality is monitored by Softech™ controls that measure viscosity.

### Standby

During long no-use periods, the standby feature maintains safe product temperatures in the mix hopper and freezing cylinder.

### Two Locking Casters

Front casters have a locking feature for operators to lock to maintain equipment in place. The locking casters can be released to move the equipment for cleaning.



Optional syrup rail and panel spinner

750 N. Blackhawk Blvd. Rockton, Illinois 61072  
**800-255-0626**  
Phone 815-624-8333 Fax 815-624-8000  
[www.taylor-company.com](http://www.taylor-company.com)  
info@taylor-company.com

ISO 9001:2008  
Registered Firm



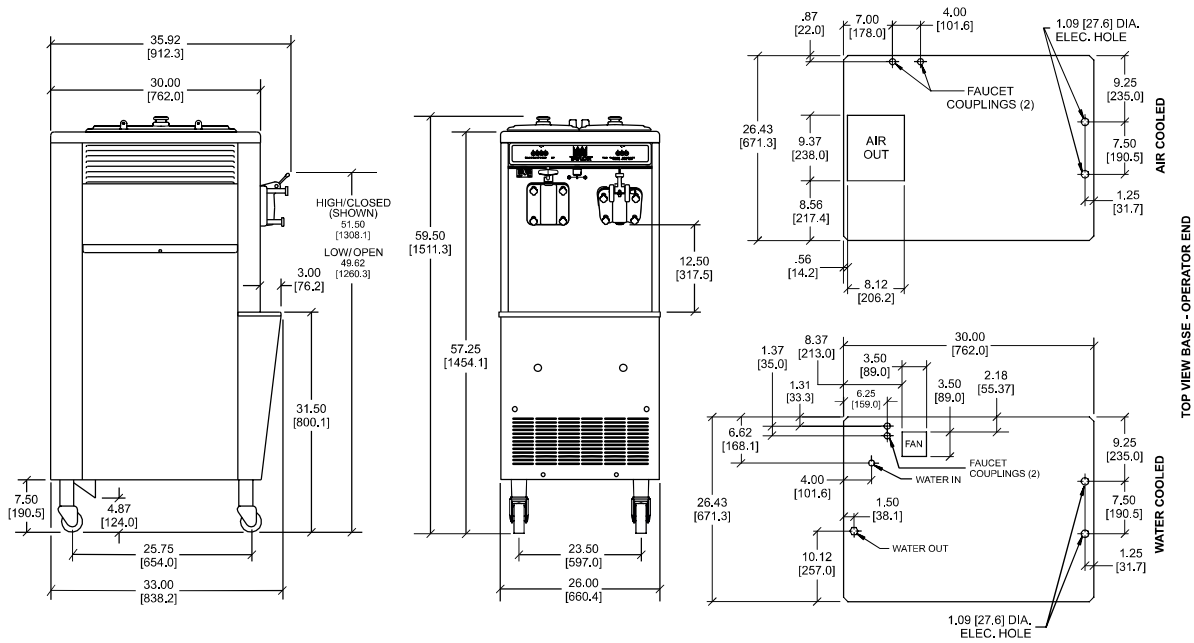
Standard 6



LISTED  
5A2318



Selected 50  
Hz. Models



FIGURES IN BRACKETS INDICATE MILLIMETERS / DECIMAL DIMENSIONS EQUAL TO ( PLUS OR MINUS 1/16 INCH [1.5mm] )

Weights	lbs.	kgs.
Net	675	306.2
Crated	699	317.0
Volume	cu. ft.	cu. m.
Volume	47.4	1.33
Dimensions	in.	mm.
Width	26	661
Depth	33	839
Height	59-1/2	1512
Floor Clearance	7-1/2	191

\*Mounted on standard casters

Electrical	Maximum Fuse Size		Minimum Circuit Ampacity		Poles (P) Wires (W)
	Left	Right	Left	Right	
208-230/60/1 Air	30	35	21	23	2P 3W
208-230/60/1 Water	30	35	21	23	2P 3W
208-230/60/3 Air	15	20	13	15	3P 4W
208-230/60/3 Water	15	20	13	15	3P 4W
220-240/50/1 Air	25	20	18	17	2P 3W
380-415/50/3N~ Air	10	10	8	8	4P 5W

This unit may be manufactured in other electrical characteristics and may have additional regulatory agency approvals. Consult the local Taylor Distributor for other electrical characteristics and agency approvals based on specific electrical and country requirements.

(For exact electrical information and approval marks, always refer to the data label of the unit.)

**Continuing research results in steady improvements; therefore, these specifications are subject to change without notice.**

**Bidding Specs**

Electrical: Volt \_\_\_\_\_ Hz \_\_\_\_\_ ph \_\_\_\_\_  
 Neutral: Yes No      Cooling: Air Water NA

Options: \_\_\_\_\_

**Specifications**

**Electrical**

Two dedicated electrical connections are required. See the Electrical chart for the proper electrical requirements. Manufactured to be permanently connected. Consult your local Taylor distributor for cord & receptacle specifications as local codes allow.

**Beater Motor**

Shake, 1.0 HP; Soft Serve, 1.5 HP

**Refrigeration System**

Shake, 11,000 BTU/hr.; Soft Serve, 9,500 BTU/hr. R404A  
 Separate Hopper Refrigeration (SHR), One, 400 BTU/hr. R134a.  
 (BTUs may vary depending on compressor used.)

**Air Cooled**

Minimum 3" (76 mm) around all sides. Install the deflector provided to prevent recirculation of warm air. Minimum air clearances must be met to assure adequate air flow for optimum performance.

**Water Cooled**

Water inlet and drain connections under side of base 1/2" FPT.

**Options**

- Cone Dispenser
- Faucet
- Refrigerated Syrup Rail, 3 compartment & Panel Spinner
- Side Mount Syrup Rail, 2 compartment

**Authorized Taylor Distributor**

 **TAYLOR®**  
 750 N. Blackhawk Blvd.  
 Rockton, Illinois 61072  
[www.taylor-company.com](http://www.taylor-company.com)