



Item No. \_\_\_\_\_

# 632 Combination Freezer

Single Shake, Single Soft Serve

### Features

Offer all the popular shake and soft serve variations, from low fat shakes and smoothies, and low or non-fat ice creams to custards, yogurt and sorbet.

### Freezing Cylinder

Shake side, 7 quart (6.6 liter).  
Soft Serve side, 3.4 quart (3.2 liter).

### Refrigerated Mix Hoppers

Two, 20 quart (18.9 liter). Separate hopper refrigeration (SHR) maintains mix below 41°F (5°C) during Auto and Standby modes.

### Indicator Lights

Mix Low light reminds operator to add mix.

### Electronic Controls

Finished product quality is monitored by Softech™ controls that measure viscosity.

### Standby

During long no-use periods, the standby feature maintains safe product temperatures in the mix hopper and freezing cylinder.



Optional syrup rail and panel spinner



Standard 6



SA2650



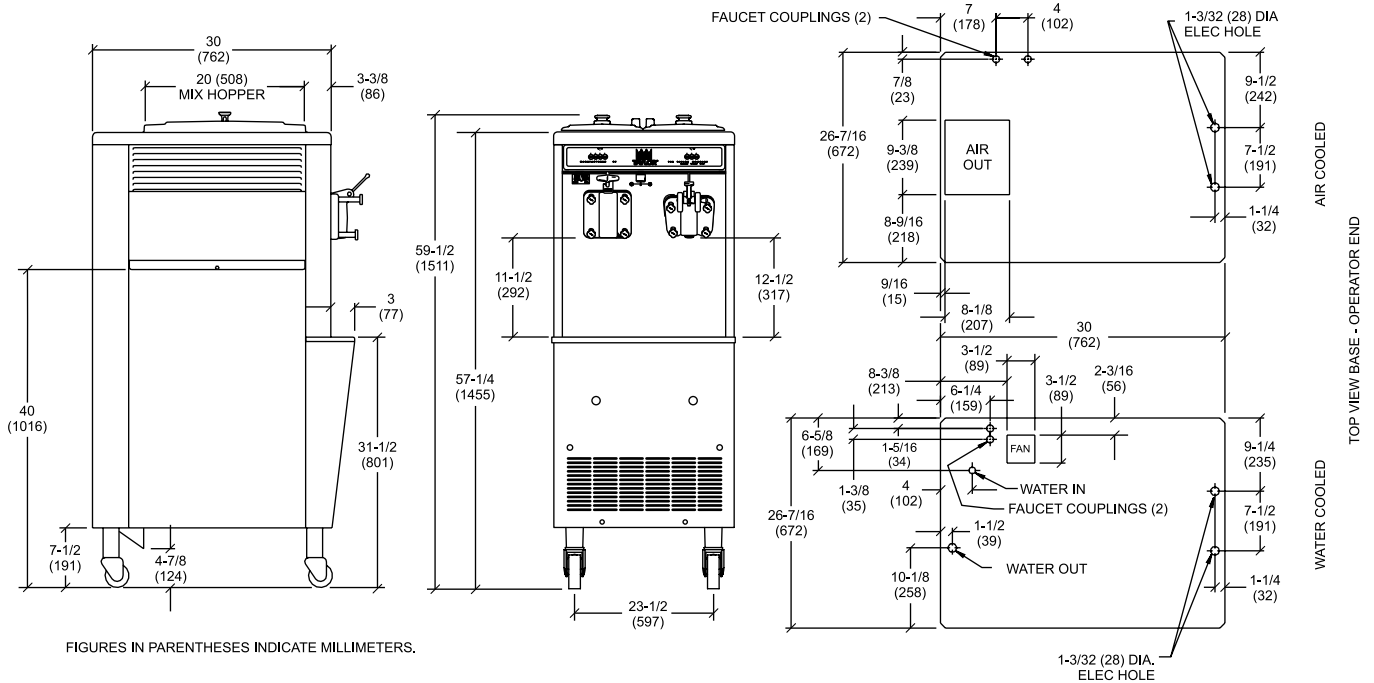
Selected 50 Hz. Models

Rockton, Illinois 61072  
**800-255-0626**  
Phone 815-624-8333 Fax 815-624-8000  
**www.taylor-company.com**  
e-mail: info@taylor-company.com

International Office  
Taylor Company S.r.l.  
Roma, Italy  
Tel: **+39-06-420-12002** Fax: +39-06-420-12034  
e-mail: romeoff@taylor-company.com

ISO 9001:2000  
Registered Firm

# 632 Combination Freezer



FIGURES IN PARENTHESES INDICATE MILLIMETERS.

Weights	lbs.	kgs.
Net	675	306.2
Crated	785	356.1
	cu. ft.	cu. m.
Volume	48.1	1.36

Dimensions	in.	mm.
Width	26-7/16	672
Depth	33	839
Height	59-1/2	1511
Floor Clearance	7-1/2	191

\*Mounted on standard casters

Electrical	Maximum Fuse Size		Minimum Circuit Ampacity		Poles (P) Wires (W)
	Left	Right	Left	Right	
208-230/60/1 Air	30	35	24	23	2P 3W
208-230/60/1 Water	30	35	21	23	2P 3W
208-230/60/3 Air	20	20	16	15	3P 4W
208-230/60/3 Water	15	20	13	15	3P 4W
220-240/50/1 Air	25	20	19	16	2P 3W
380-415/50/3N~ Air	10	10	9	8	4P 5W

This unit may be manufactured in other electrical characteristics. Refer to the local Taylor Distributor for availability. (For exact electrical information, always refer to the data label of the unit.)

## Bidding Specs

Electrical: Volt \_\_\_\_\_ Hz \_\_\_\_\_ ph \_\_\_\_\_  
 Neutral:  Yes  No Cooling:  Air  Water  NA

Options: \_\_\_\_\_

## Specifications

### Electrical

Two dedicated electrical connections are required. See the Electrical chart for the proper electrical requirements. Manufactured to be permanently connected. Consult your local Taylor distributor for cord & receptacle specifications as local codes allow.

### Beater Motor

Shake, 1.0 HP; Soft Serve, 1.5 HP

### Refrigeration System

Shake, 11,000 BTU/hr.; Soft Serve, 9,500 BTU/hr. R404A  
 Separate Hopper Refrigeration (SHR), One, 400 BTU/hr. R134a.  
 (BTUs may vary depending on compressor used.)

### Air Cooled

Minimum 3" (76 mm) around all sides. Install the deflector provided to prevent recirculation of warm air. Minimum air clearances must be met to assure adequate air flow for optimum performance.

### Water Cooled

Water inlet and drain connections under side of base 1/2" FPT.

## Options

- Cone Dispenser
- Faucet
- Refrigerated Syrup Rail, 3 compartment & Panel Spinner
- Side Mount Syrup Rail, 2 compartment

Continuing research results in steady improvements; therefore, these specifications are subject to change without notice.



**Taylor Company,**  
 A Division of Carrier Commercial Refrigeration, Inc.  
 Rockton, Illinois 61072  
 815-624-8333 800-255-0626 Fax 815-624-8000  
 www.taylor-company.com

Printed in U.S.A.

029267-ADV

6/06